

(639526-P)

# RBM Building Machinery Trading Sdn Bhd

Tel: (6)06-677 3997 Fax: (6)06-677 4229

H/P:(6)019-621 8880 (GOH)

Head Office: Lot 108, Senawang Industries Estate,  
70450 Seremban, Negeri Sembilan, Malaysia.

E-mail: chuawoo@pd.jaring.my



CERTIFICATE NO. 20887/M

WINNER OF  
PRODUCT EXCELLENCE  
INDUSTRY EXCELLENCE  
AWARD 2008

# 3in1

## Foam Concrete Machine Model : RBM-1000



# GOOD NEWS

SAVE  
MATERIALS COST  
**60%**

INCREASE  
PRODUCTIVITY  
**350%**

Foam Generator

PATENT GRANTED  
MY - 133290-A

# NEW PRODUCT

### ADVANTAGES OF FOAM CONCRETE MACHINE (Model : RBM-1000)



#### QUALITY GUARANTEE

- Mixing ratio can be controlled by RBM-1000.
- Every batch of mixture is consistent
- Stone and unnecessary object can be filter away.



#### SMALL NUMBER OF WORKERS

- Minimum workers are 3 people
- Maximum workers are 5 people
- It can be either skilled or unskilled workers.



#### TIME SAVE

- The machine can produce one batch of mixture within 2 to 3 minute only.



#### READY MIX CONCRETE TRUCK

- Concrete truck does not require.



#### HIGH PROFIT

- It can pump out 7.5m<sup>3</sup> of foam concrete per hour.
- High production, high profit.



#### MOBILE CRANE

- RBM-1000 can pump the foam concrete up to 35storeys (125m height)
- Mobile crane does not require.

WEBSITE: <http://www.rbm.com.my>

VIDEO HOMEPAGE: <http://www.youtube.com/watch?v=3xzZpGZewQ4>

**Special Ability:**  
Auto-weighing  
scoring system



## RBM-1000

MODELS:	RBM 1000
Mixer:Tank Capacity	600 Litres
Mixing Capacity	500 Litres
Max.Speed	40-80rpm(variable speed control)
E-Motor	4kW,380V~415V,50Hz
Foam Generator Tank:	
Foam Generator Volume-	400 Litres
Foam LiquidVolume-	300 Litres
Foam Output Capacity	600 Litres/min(6bar) 400 Litres/min(4bar)
Operating Pressure	4-6bar
Air Compressor:	
Compressor free air delivery	14 CFM,3HP
Air tank capacity	116L
Mortar Pump:	Squeeze Type
Output Capacity (adjustable)	0~7.5m <sup>3</sup> / hr
Pumping Distance	125m height, 250m horizontal
E-motor	7.5kW, 380V~415V, 50Hz
Sand and Cement Feeder (Optional):	Belt Conveycr 350W
Length	5m
Height	2m
E-Motor	0.75kW, 380V, 50Hz
Overall Unit Size:	
Length	2.50m
Width	1.50m
Height	1.86m
Total Weight	980kg

**WINNER OF  
PRODUCT EXCELLENCE AWARD  
INDUSTRY EXCELLENCE  
AWARD 2008**

Organised  
By:



Judgement  
By:



## RBM Building Machinery Trading Sdn.Bhd.(ISO 9001 Certified)

established since year 1995, is well experience, reputed and highly recognized as the manufacturer cum supplier of Spray Plastering Machine and until todote, more than thousand project had been completed. Our machine also had been awarded: **PATENT GRANT MY-133290-A; INDUSTRIAL DESIGN and SIRIM TESTED PRODUCT as well as CIDB REGISTERED COMPANY.**

Nowdays, IBS system had been introduced and encouraged by Malaysia Government as a systematic construction process to:

*Avoid materials wastage;  
Consistance of quality;  
Save cost & reduce construction workers,  
increase production of buildings.*

Therefore inline with our government's new policy, our company also follow the construction standardize and run with the **Industrialised Building System (IBS)** and **Advanced Building System (ABS)** by inventing the **3 in 1 Spray Plastering Machine (RBM-980 & RBM-990)** and **Foam Concrete Machine (RBM-1000)** as our latest innovative products to the market.

### ADDITIVE ITEM:

#### Description

- 1.Ready-to-used powder admixture with the advanced RMB Technology.
- 2.Specially designed to reduce the weight normal concrete and replaces blocks/bricks.

#### Features

- Simplify works
- Produce stable foam
- Better workability
- Reduce the concrete weight
- Smoother surface

#### Applications

- 0.1 kg (foaming additive)+10 to 40 kg (water) into foam generator
- Foam Mortar for RBM-1000 (foam concrete machine)
- Able to generate 2000-5000 times of foam from a part of RBM foam additive

Please VISIT our website at [www.rbm.com.my](http://www.rbm.com.my)



## RBM Others Construction Equipments

- 1). 3 In 1 Spray Plastering Machine/ Cement Mortar Pump (Model:RBM 990/980)
- 2). RBM Mortar / Easy Flow / Hardener Additive, Pan Mixer
- 3). Skim Coat Spray Machine
- 4). Floor Cleaning Concrete Machine
- 5). PVC Corner Bead / Groove Joint
- 6). Road Curb Extruder
- 7). Dry Mix Plant, Mini Batching Plant



# CAST A SAMPLE LOW COST HOUSE IN 5 MINUTES WITH RBM 3 IN 1 MODEL:RBM-1000



## OTHER APPLICATION:FLOOR SCREEDING



**Pumping**



**Touch Up**



**Drying Process**



**(Next Day) Harden**



**RBM Building Machinery Trading Sdn Bhd**

(639526-P)

*Warmly Welcome*



**Y.A.B DATO SRI MOHD NAJIB TUN ABDUL RAZAK**

**DEPUTY PRIME MINISTER, MALAYSIA**

**LAUNCHING OUR NEW MALAYSIA PRODUCT**

**MALAYSIA IBS INTERNATIONAL EXHIBITION 2009 (MIE '09)**

**CIDB CONVENTION CENTRE, MALAYSIA**



Foam Generator



**PATENT GRANTED  
MY - 133290-A**

**3 in 1 Model: RBM-1000 Foam Concrete Mixing & Pumping Machine**

**"BARANGAN BUATAN MALAYSIA"**

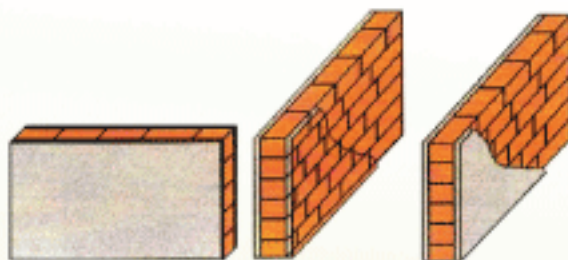
VALUED SUPPORT OF MALAYSIA PRODUCT FROM:

**Y.A.B DATO SRI MOHD NAJIB TUN ABDUL RAZAK**

**DEPUTY PRIME MINISTER, MALAYSIA**

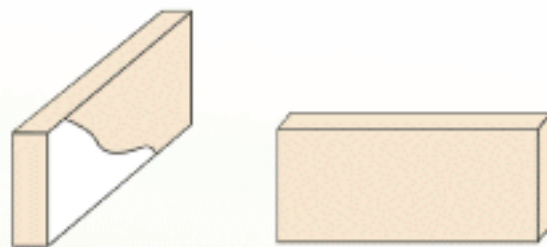
## COMPARISON MATERIALS COST BETWEEN

Clay Brick Block + Plastering VS RBM Foam Concrete Table shows 1m<sup>2</sup> of Area



1524mm (L) x 660.4mm (H) X 141.6mm (W)

VS



1524mm (L) x 660.4mm (H) x 101.6mm (W)

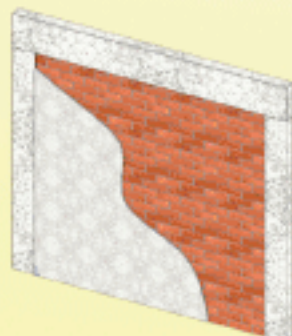
Materials	Clay Brick Block + Plastering (20mm both side)	Cost per unit or kg or m <sup>2</sup> (RM)	Sub-Total (RM)	RBM Foam Concrete	Cost per kg or litre (RM)	Sub-Total (RM)
Cement	14.3kg	0.24	3.432	29.56kg	0.24	7.0944
Sand	57.5kg	0.04	2.30	73.89kg	0.04	2.9556
Water	11.5kg	0.0015	0.01725	13.85kg	0.0015	0.020775
Foam	-	-	-	49.86 litres	0.015	0.7479
Block	50 units	0.35	17.50	-	-	-
Laying Brick Mortar	-	2.80	-	-	-	-
		26.04925				10.8187

Comparison data and calculation table is base on RBM experiences

Copyright © All Right Reserved

## COMPARISON COST BETWEEN

BRICKS + PLASTERING FOR 10m<sup>2</sup>



Conventional Method	Bricks cost (RM0.35 per unit)	Plastering Mortar Materials Cost (RM)	Laying Bricks Mortar Cost (RM)	Laying Bricks Labours Cost (RM 10 per m <sup>2</sup> )	Plastering Labours cost (RM 15 per m <sup>2</sup> included finishing coat)	Total Cost (RM)
500 Unit Bricks (10m <sup>2</sup> )	175.00	57.50	28.00			260.50
5 unskilled workers 7 skilled workers				100.00	300.00	400.00 <u>660.50</u>

VS

RBM FOAM CONCRETE FOR 10m<sup>2</sup>



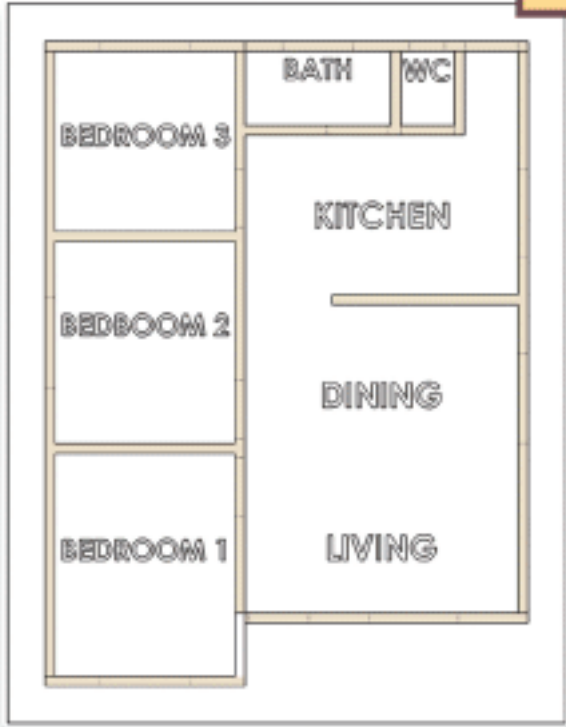
RBM-1000 Advance IBS System	Materials cost RM (thickness 100mm)	Re-Use (RM 2 per m <sup>2</sup> both sides)	Skimcoat (RM 5 per m <sup>2</sup> )	Labour cost (RM)	Total Cost (RM)
Foam (26.92kg) Water (138.5kg) Cement (295.6kg) Sand (738.9kg)	7.479 0.208 70.944 <u>29.556</u> 108.187				108.187
Formworks		40.00			40.00
1 unskilled worker 1 skilled worker	-	-	100.00	15.00	115.00 <u>263.19</u>

Fixed Cost: Beam - 3.9(1) x 0.150 (w) X 0.45(h)  
Columns - 0.3 (1) x 0.125 (w) x 3.3 (2)(h)

Comparison data and calculation table is base on RBM experiences

Copyright © All Right Reserved

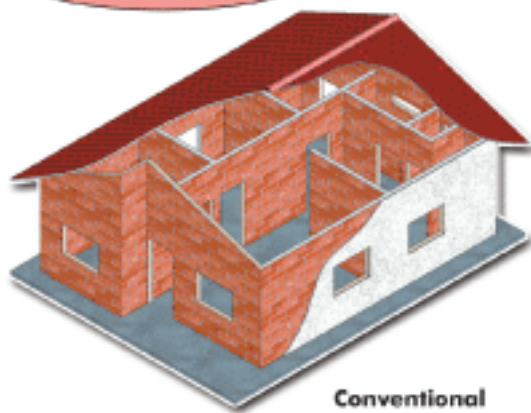
**Design of a 13m<sup>3</sup> house  
Top View**



**COMPARISON WALL MATERIALS COST**

13m<sup>3</sup> houses

Bricks + Plastering



Conventional method

**VS**

RBM Foam Concrete

Density: 1200kg/m<sup>3</sup>



RBM-1000 IBS System

Materials	Clay Brick Block + Plastering (20mm both side)	Cost per unit or kg or m <sup>3</sup> (RM)	Sub-Total (RM)	RBM Foam Concrete	Cost per kg or litre (RM)	Sub-Total (RM)
Cement	1859kg	0.24	446.16	3642.8kg	0.24	922.27
Sand	7475kg	0.04	299.00	9605.7kg	0.04	384.23
Water	1495kg	0.0015	2.24	1800.5kg	0.0015	2.70
Foam	-	-	-	6481.8 litres	0.015	97.23
Block	6500 units	0.35	2275.00	-	-	-
Laying Brick Mortar	-	-	364.00	-	-	-
			<b>3386.40</b>			<b>1406.43</b>



## ADVANTAGE OF FOAM CONCRETE



### FIRE RESISTANCE

-The foam concrete is no reaction occur when expose to fire



### WATER RESISTANT

-The foam concrete does not absorb water



### GOOD INSULATION

-The foam concrete not a good heat conductor  
-Inside the house remain cool



### SOUND PROOF

-The wall can absorb the echo and reduce the noise



### LIGHT WEIGHT

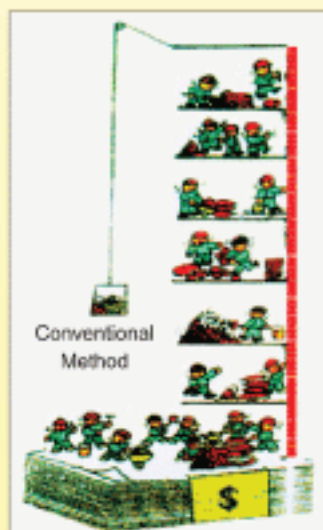
-The concrete has millions of air bubbles trap inside that make it very light.



### CAN BE SAWN, NAILED & DRILLED

-The foam concrete is easy to sawn, nailing and drilled without damage the foam concrete's structures

## COMPARISON AREA AND TIME BETWEEN



Conventional Method	Bricks+Plastering	RBM-1000 Advance IBS System	Foam Concrete
Maximum capacity of plastering	21.43m <sup>2</sup> /hr	Maximum capacity of pumping foam concrete	7.5m <sup>3</sup> /hr x 10=75m <sup>2</sup>
Possible area produce in 1 day (base on RBM boucher is 7hr)	150m <sup>2</sup>	Possible area produce in 1 day (7 hr work)	52.5m <sup>3</sup> x 10=525m <sup>2</sup>
Area of 10m <sup>2</sup>	Time	Area of 10m <sup>2</sup>	Time
Formwork (2m <sup>2</sup> /hr x 5 labours)	-	Formwork (reusable) (4m <sup>2</sup> /hr x 5 labours)	1 hour
Laying Brick (5 labours: 2500 pieces a day)	1 hr 5 minutes	Mixing (continouns mixing while pumping)	3 minutes
Plastering (12 labours included mixing)	56 minutes	Filling	8 minutes
Total Time	2 hr 01 mins	Total Time	1 hr 11 mins

### RBM-1000 IBS Advance System

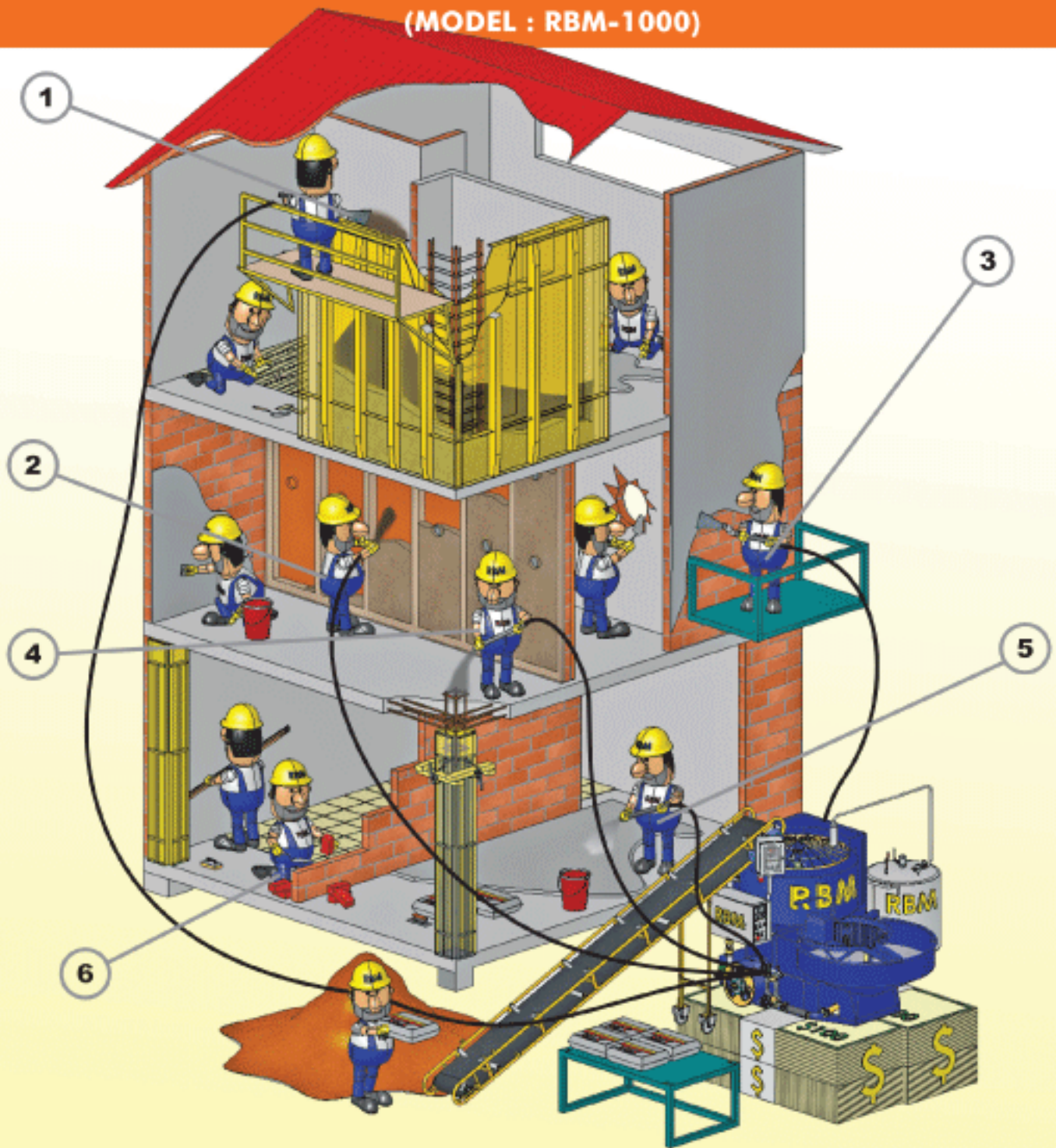


## Saving Percentage Analysis Data from Brick+Plastering VS Foam Concrete

Comparison	Bricks+Plastering (Man-works)	RBM Foam Concrete (Machine)	Saving Percentage	Production area
Materials (base on 1m <sup>2</sup> table)	RM26.05	RM10.8187	58.47%	1m <sup>2</sup>
Materials (base on 10m <sup>2</sup> table)	RM260.50	RM108.187	58.47%	10m <sup>2</sup>
Materials (base on 13m <sup>2</sup> table)	RM3386.40	RM1406.43	58.47%	130m <sup>2</sup>
Labour	12 workers	2 workers	83%	10m <sup>2</sup>
Time	2 hours 01 mins	1 hours 11 mins	41.3%	10m <sup>2</sup>
Area	150m <sup>2</sup> (7 hrs works)	525m <sup>2</sup> (7 hrs works)	+350% (increase productivity)	3.5 times



# APPLICATION OF RBM FOAM CONCRETE MIXING & PUMPING MACHINE (MODEL : RBM-1000)



1. Infill foam concrete into formwork for Solid external, internal wall/Solid Partition wall;
2. Infill EPS foam concrete into solid internal wall/Solid Partition wall;
3. Spray plastering, Conveying Plastering Mortar;
4. Infill reinforcement chipping concrete/design mix into column/slab/wall (Grade 20-35);
5. Floor screeding (self-leveling concrete), Water Proofing, Groutings;
6. Laying bricks, Tile Works, Repair Works.

Lot 108, Senawang Industries Estate, 70450 Seremban, N.S., Malaysia. Tel: (6)06-677 3997 Fax: (6)06 677 4229

**GOH CHUA WOO**  
**019-621 8880**

**TEE KHENG HUAT**  
**019-621 8809**

**THONG KEAK KHEONG**  
**019-622 2880**

**TEE YEW HIAN**  
**019-289 5980**